

Release Notes



# Artemis 9000/EX

## ENTERPRISE EDITION 2017.01

Published: April 2017

## COPYRIGHT

While every attempt has been made to ensure that the information in this document is accurate and complete, some typographical, technical or other errors may exist. Artemis International Solutions does not offer any warranty for fitness for a particular purpose regarding any information contained in this document and will not under any circumstances accept responsibility for any kind of loss or damages that either directly or indirectly results from the use of this document.

This page shows the original publication date. The information contained in this document is provided for information purposes only, and is subject to change without notice. Any improvements or changes to the product will be documented in subsequent editions.

This document is protected by copyright. All Rights Reserved. No part of this document may be photocopied, reproduced, or translated into another language without the prior written consent of Artemis International Solutions Corporation.

U.S. Government Restricted Rights. The software and accompanying materials are provided with Restricted Rights. Use, duplication, or disclosure by the U.S. Government is subject to restrictions as set forth in subparagraphs (c) (1) and (2) of Commercial Computer Software - Restricted rights at Federal Acquisition Regulation, 48 C.F.R. 52.227-19 (June 1987 or current version), and the limitations as set forth in Artemis International Solutions Corporation's standard license agreement for this documentation.

© 2001-2017 Artemis International Solutions Corporation. All Rights Reserved.

ARTEMIS is a trademark of Artemis International Solutions Corporation. All other trademarks mentioned are the property of their respective owners.

## TABLE OF CONTENTS

<b>1. Release Overview</b>	<b>4</b>
<b>2. Upgrade Instructions</b>	<b>4</b>
2.1. Installation on LAN Systems (Windows 2008/2012)	4
<b>3. Certifications</b>	<b>4</b>
<b>4. Increased System Limits</b>	<b>5</b>
4.1. Increased System Limits: Networks in a Multi-Network	5
4.2. Increased System Limits: Datasets in a Project	5
<b>5. UI Refresh</b>	<b>5</b>
5.1. Artemis Client	6
5.2. PCNET	7
<b>6. Summary of Enhancements</b>	<b>8</b>
<b>7. Summary of Fixed Issues</b>	<b>8</b>
<b>8. Certified Platform Matrix</b>	<b>9</b>

## 1. Release Overview

Artemis 9000/EX Enterprise 2017.1 release contains enhancements and addresses issues reported by customers on the previous release of the product which was Version 2016.4 published in January 2017.

Artemis 9000/EX Enterprise 2017.1 release contains seven fixes, eight enhancements and has been fully certified for use in a Windows 10 environment.

Release Version	Artemis 9000/EX Enterprise 2017.1
Release Date	April 2017
Release Type	Generally Availability
Deliverables	Product Release Software and Release Documentation

## 2. Upgrade Instructions

### 2.1. Installation on LAN Systems (Windows 2008/2012)

The installation procedure for Artemis 9000/EX Version 2017 is as follows:

1. Backup any important data to tape or CD, especially the DB directory.
2. Use the Add/Remove Programs option to remove a previous install of Artemis 9000/EX.
3. Install Artemis 9000/EX Version 2017 from CD.
4. Amend the Custom Table with a current security string.
5. Install ID 5, ID 6, and ID 16 into your FILRAM to get the new softcode files.
6. If you use \*INSTALL ID 5 from O/S filename - that will only overwrite your softcode files.
7. Ensure that the printers/plotters are set up as before.
8. Copy ID010.ID from the \db\_temp to your \DB folder to get the new libraries ID files.

The service name is Artemis 9000EX Version 2017 Enterprise.

## 3. Certifications

The Artemis 9000/EX Version 2017.1 Client has been fully tested on Windows 10.

## 4. Increased System Limits

The main focus of the last three Artemis 9000/EX releases has been on increasing the existing system limits. In Version 2016.4, the Index limit with doubled to 1600 Indexes which effectively doubled the number of files that could be held in an ID. The limit of Read-only Libraries and Datasets was also doubled from 800 to 1600 per FILRAM.

The changes in 2016.4 were focused on the FILRAM size and individual file sizes.

The system limit changes that have been completed in 2017.1 include doubling the number of datasets available in a project to 1024 and increasing the multi-network limit so that 200 individual networks can be combined together in a single multi-network.

The increased system limits have a new Security String option - "F" - and are only available in the Enterprise version.

It is recommended that an ARTFREC is run twice after the system has been upgraded to Version 2017.1.

### 4.1. Increased System Limits: Networks in a Multi-Network

The previous limit on the number of networks in a multi-network was 99 datasets. In Version 2017.1, this limit has been increased to 200 networks.

The increased multi-network has been successfully analyzed, scheduled and aggregated.

### 4.2. Increased System Limits: Datasets in a Project

The previous limit was 512 datasets per project. This limit also applied to multi-user datasets in a project. In Version 2017.1, this limit has been doubled to 1024 datasets.

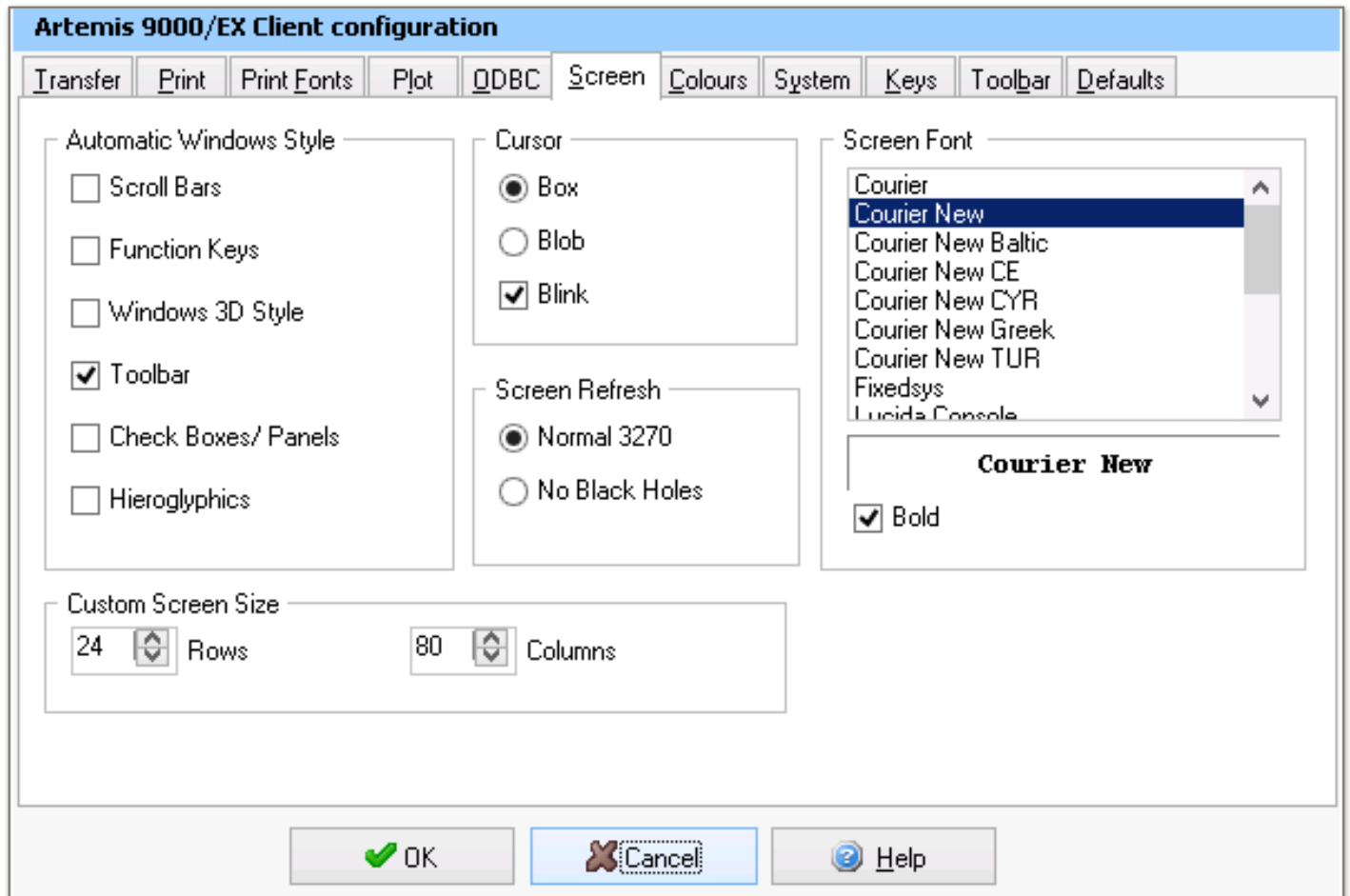
## 5. UI Refresh

Over the last two releases, Artemis have updated all the UI Editors with a new Windows 10 look and feel. As part of this process, all the icons will be replaced and functionality reviewed and optimized.

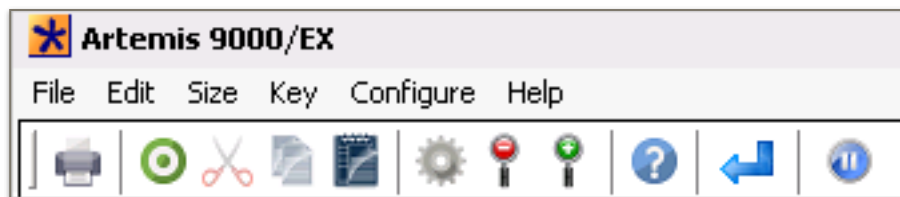
In Version 2017.1, there are updated versions of both the Artemis Client and PCNET.

## 5.1. Artemis Client

This is the new Screen panel in the Artemis Client.



This screenshot shows icons which are typical of those that have been added for all the updated UI Editors.



## 5.2. PCNET

This screen shows the main screen and the constraints layout panel in the new look PCNET.

The screenshot displays the Artemis 9000/EX Network Editor interface. The main window title is "Artemis 9000/EX Network Editor: UID ADMINIST, ID 58, Project TEST - [CHAS]". The interface includes a menu bar (File, Records, Process, Favourites, Configuration, Help) and a toolbar. The main workspace is divided into several panels:

- Activity Panel:** Contains fields for AN (A000), DU, TYP (STA), AD (Start), DE, F1, F2, F3, F4, TARGET, FSD, FSP, TS (1-JAN-2015), TC, AS, TSL, TCE, AF, and ANALYSE Results (TF: 3, ES: 2-JAN-2015, RDU, FF, LS: 5-JAN-2015).
- Constraints Panel:** Shows a grid with columns: PAN, SAN, NETIDENT, CONCAL, F1C, F2C, F3C, F4C. It features grouped rows:
 

ADC			
Group:ANALYSE			
EARLY:	ESC	EFC	
LATE:	LSC	LFC	
	FFC	TFC	
Group:SCHEDULE			
ESCS	EPSCS	TPCS	
Group:Other information			
ORDC	RNKC	RN	
0 Predecessors		0 Resources	
		2 Success	
		A100 Clear	
		D000 Orde	
- Configuration Window:** Overlaid on the right, showing "Available Fields" (AAN, AN, FFCS) and a grid with 4 columns and 12 rows. It includes a "Merge" button and a "Groups" icon.
- Navigation:** Buttons for "< Back", "Next >", "Finish", "Cancel", and "Reset to System Default" are located at the bottom of the Configuration window.

## 6. Summary of Enhancements

Issued ID	Summary
ART9KCID-2333	System Limits: Make necessary changes to change the limit of Multi-Networks for 200.
ART9KCID-1859	System Limits: Increase the Multi-Network Analyze limit from 99 to 200 networks.
ART9KCID-1860	System Limits: Increase the Multi-Network Schedule limit from 99 to 200 networks.
ART9KCID-1861	System Limits: Increase the Multi-Network Unschedule limit from 99 to 200 networks.
ART9KCID-1863	System Limits: Increase the Multi-Network Aggregate limit from 99 to 200 networks.
ART9KCID-2207	PCEDIT: Improve Performance of SET by 8-10 times.
ART9KCID-2211	Increase limit of Summary Data being shown on Artemis from 26 to 50 characters.
ART9KCID-2307	System Limits: Dataset and Multi User Dataset Limit Increase from 512 to 1024 per Project.

## 7. Summary of Fixed Issues

Issued ID	Summary
ART9KCID-1852	PCEDIT: Print Preview is showing a Range check error with the Fields subcommand.
ART9KCID-1868	Barchart Editor: The Select All/Deselect All button overwrites the Resource Names under Aggregation.
ART9KCID-1917	Barchart Editor: Add, Delete and Repeat buttons overwrite in Activity Details.
ART9KCID-2030	PlotView: Text Alignment on Version 2016 plots is different from that in Version 11.
ART9KCID-2209	PCBAR Lite: List Index Out of Bounds error while enabling Details Panel.
ART9KCID-2418	PCEDIT: Out of Memory issues with SET on large datasets.
ART9KCID-2437	PCEDIT: Changes made in Font etc are not being saved in a separate INI file.



## 8. Certified Platform Matrix

Artemis 9000/EX Enterprise 2017	Update 1
<b>Server</b>	Windows 2012 Server R2, Windows 2008 Server SP2, Windows 2003 Server SP2
<b>Client</b>	Windows 10, Windows 8, Windows 7, Windows Vista, Windows XP Professional
<b>Database Interfaces</b>	Oracle 11g, Oracle 10g, SQL Server 2012, SQL Server 2008, SQL Server 2005, DB/2.9.1, DB/2.8.1
<b>Microsoft Project Interface</b>	Microsoft Project 2010, 2007 and 2003

### Notes:

- ▶ Both 32-bit and 64-bit are supported for the Windows 7, 8 & 10 client operating system.
- ▶ The following steps need to be followed to setup the Microsoft Project 2010 interface:
  - ▶ Install .Net framework 4.0 Client Profile or Full version by clicking on the \Install\dotNetFx40\_Client\_setup.exe
  - ▶ Install Visual Studio Tools for Office (VSTO) for Win32 or Win64 platforms by clicking on the \Install \vstor40\_x86.exe or \Install\vstor40x64.exe
  - ▶ Install MSPProjectAddIn and macros for MS Project 2010. You have to run cmd file from \MSPProjectAddIn \Install.cmd
  - ▶ All the relevant files can be found in a new folder called MSP2010 in the Artemis\Client folder. All the applications referenced are Open Source so there are no licensing implications.
  - ▶ Apply the SAVE AS MPX option to Microsoft Project:
    1. Locate the file called AR9000.mpp, found in the Client subdirectory.
    2. Double-click the file, which will locate and open your existing MSP.
    3. Click to Enable Macros.

**Note:** You may need to temporarily lower the security level for MSP to medium until after installing the Macros. An empty project will be opened and the "Save an MPX" option will be shown on the MSP Files drop down menu list.