

Release Notes

---

# Artemis 9000/EX

Enterprise Edition 2016.4

Published: January 2017

## **COPYRIGHT**

While every attempt has been made to ensure that the information in this document is accurate and complete, some typographical, technical or other errors may exist. Artemis International Solutions does not offer any warranty for fitness for a particular purpose regarding any information contained in this document and will not under any circumstances accept responsibility for any kind of loss or damages that either directly or indirectly results from the use of this document.

This page shows the original publication date. The information contained in this document is provided for information purposes only, and is subject to change without notice. Any improvements or changes to the product will be documented in subsequent editions.

This document is protected by copyright. All Rights Reserved. No part of this document may be photocopied, reproduced, or translated into another language without the prior written consent of Artemis International Solutions Corporation.

U.S. Government Restricted Rights. The software and accompanying materials are provided with Restricted Rights. Use, duplication, or disclosure by the U.S. Government is subject to restrictions as set forth in subparagraphs (c) (1) and (2) of Commercial Computer Software - Restricted rights at Federal Acquisition Regulation, 48 C.F.R. 52.227-19 (June 1987 or current version), and the limitations as set forth in Artemis International Solutions Corporation's standard license agreement for this documentation.

© 2001-2017 Artemis International Solutions Corporation. All Rights Reserved.

ARTEMIS is a trademark of Artemis International Solutions Corporation. All other trademarks mentioned are the property of their respective owners.

## TABLE OF CONTENTS

<b>1. Release Overview</b>	<b>4</b>
<b>2. Upgrade Instructions</b>	<b>4</b>
2.1. Installation on LAN Systems (Windows 2012 Server)	4
<b>3. Increased System Limits</b>	<b>5</b>
3.1. Increased System Limits: FILRAM Size	5
3.2. Increased System Limits: Increase the File Size	5
<b>4. CostView Interface</b>	<b>6</b>
4.1. Approach	6
<b>5. UI Refresh</b>	<b>8</b>
5.1. Barchart Editor	8
5.2. PCEDIT	9
5.3. PCEDIT	9
5.4. PCVIEW	10
<b>6. Summary of Enhancements</b>	<b>11</b>
<b>7. Summary of Fixed Issues</b>	<b>12</b>
<b>8. Certified Platform Matrix</b>	<b>13</b>

## 1. Release Overview

Artemis 9000/EX Enterprise 2016.4 release contains enhancements and addresses issues reported by customers on the previous release of the product which was Version 2016.3 published in September 2016.

Update 4 contains ten fixes and eight enhancements.

<b>Release Version</b>	Artemis 9000/EX Enterprise 2016.4
<b>Release Date</b>	January 2017
<b>Release Type</b>	Generally Availability (Customer Visible)
<b>Deliverables</b>	Product Release Software (Installer zip uploaded to FTP) Release Documentation (User Manuals and Release Notes)

## 2. Upgrade Instructions

### 2.1. Installation on LAN Systems (Windows 2012 Server)

The installation procedure for Artemis 9000/EX Version 2016 is as follows:

1. Backup any important data to tape or CD, especially the DB directory.
2. Use the Add/Remove Programs option to remove a previous install of Artemis 9000/EX.
3. Install Artemis 9000/EX Version 2016 from CD.
4. Amend the Custom Table with a current security string.
5. Install ID 5, ID 6, and ID 16 into your FILRAM to get the new softcode files.
6. If you use \*INSTALL ID 5 from the O/S filename - that will only overwrite your softcode files.
7. Ensure that the printers/plotters are set up as before.
8. Copy ID010.ID from the \db\_temp to your \DB folder to get the new libaried ID files.

The service name is Artemis 9000EX Version 2016 Enterprise.

### 3. Increased System Limits

The main focus of the Artemis 9000/EX release has been on increasing the existing system limits. In Version 2016.3, the Index limit was doubled to 1600 indexes which effectively doubled the number of files that could be held in an ID. The limit on Read-only Libraries and Datasets was also doubled from 800 to 1600 per FILRAM

The changes in 2016.4 are focused on the FILRAM size and individual file sizes.

The system limit changes will be completed in 2017.1 with an increase to the Project Header size, the number of datasets available in a project doubled to 1024 and the multi-network limit also doubled to 198 per FILRAM.

The increased system limits have a new Security String option - "F".

It is recommended that an ARTFREC is run once the system has been upgraded to Version 2016.4.

#### 3.1. Increased System Limits: FILRAM Size

One of the most requested changes in the history of the product has been to increase the FILRAM size. In Version 2016.4, the FILRAM size has been increased for 256 Mb to 1 Gigabyte.

To be more precise in the calculation, the FILRAM is actually measured in Blocks. There are 4,096 Bytes in each block. With the Huge option, the previous limit was 64,000 Blocks which equates to 262 Mb. The new limit is four times bigger at 1.048 Gigabytes with new option F. With Huge option (H), it is increased from 64000 to 75000 and without Option F and H, it is increased from 32000 to 40000.

This increase should avoid the need for onerous housekeeping routines to maintain the FILRAM size below the system limit.

#### 3.2. Increased System Limits: Increase the File Size

Another common enhancement request has been to increase the defined file size. When copying data to a file, this message is often encountered:

```
* cop all in nfreda to &fred1  
File &FRED1 exceeds size limit (block count >1500)
```

In Version 2016.4, the file size has effectively been doubled from 6 Mb to 12 Mb which should avoid these kind of messages in the future.

## 4. CostView Interface

Artemis 9000/EX is an extremely powerful and flexible scheduling engine optimized to process high volumes of data. Earned value management is a project management technique for measuring project performance and progress. It has the ability to combine measurements of the project management triangle.

- ▶ Scope
- ▶ Time
- ▶ Costs

Earned Value Management is able to provide accurate forecasts of project performance problems, which is an important contribution for project management.

Earned Value is an increasingly important measure for Government contracts.

Artemis has an earned value tool called CostView. Traditionally, it was only possible to use CostView in conjunction with ProjectView. However, recent product changes have opened up the possibility of taking scheduling data out of Artemis 9000/EX and performing earned value calculations with CostView.

In summary, Artemis CostView is a powerful application for project and program cost planning, control and earned value management reporting. It is designed for program managers, financial managers, cost and control account managers, controllers and Integrated Product Teams.

As an Earned Value Management tool, it provides complete project, contract and financial management, as well as analysis and reporting.

Combining the scheduling power of Artemis 9000/EX with the earned value capability of CostView adds a new and exciting dimension to the successful implementation of projects under the Artemis umbrella.

### 4.1. Approach

The approach being taken to moving data from Artemis 9000/EX to CostView is similar to that being taken when exporting data to Microsoft Project. There is now a file in ID 5 called COSTMAP1 which allows the mapping of Artemis 9000/EX schedule data in a format that can be uploaded into CostView. The process is one-way only with the schedule data being taken out of 9000 and passed into CostView.

The data structures are setup in CostView prior to the import - they are not created as part of the import process.

There are two key sets of information that are exported from Artemis 9000/EX:

- ▶ The Work Package information which has four mandatory fields:
  - ▶ Project - held as a User Field
  - ▶ Control Account - NETIDENT
  - ▶ Work Package - AN
  - ▶ Resources - RES
  
- ▶ The Cost Value information which has six mandatory fields:
  - ▶ Project - held as a User Field
  - ▶ Control Account - NETIDENT
  - ▶ Work Package - AN
  - ▶ Resources - RES
  - ▶ Department - held as a User Field
  - ▶ Trace - held as a User Field

Full documentation is provided with this interface.

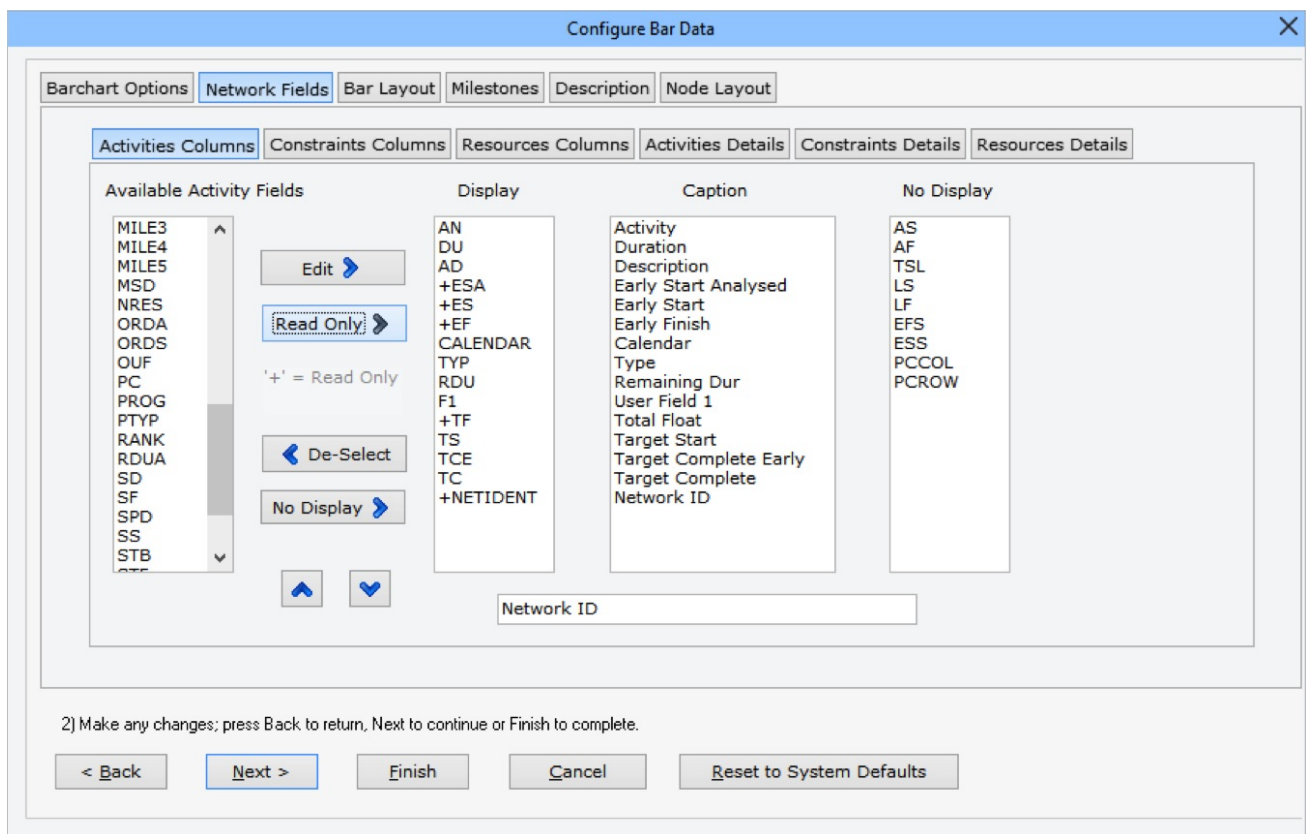
## 5. UI Refresh

Over the next two releases, Artemis will update all the UI Editors with a new Windows 10 look and feel. As part of this process, all the icons will be replaced and functionality reviewed and optimized.

In Version 2016.4, there are updated versions of Barchart Editor; PCEDIT and PCVIEW.

### 5.1. Barchart Editor

This is the new Configure Bar Data panel which is a good illustration of the new look and feel visible in Version 2016.4.





### 5.2. PCEDIT

This is the revised appearance for PCEDIT:

The screenshot shows the PCEDIT software interface with a menu bar (File, Edit, Navigate, Process, Window, Configure, Help) and a toolbar. The main window displays a table titled "Tim's Title" with the following data:

RN	Activity Description	Duration	Description	Early Start	Early Finish	Late Start	Late Finish
1	A000		Paint arbor	1-JAN-16	31-DEC-15	1-JAN-16	31-DEC-15
2	D000		Order bulk lagging	1-JAN-16	31-DEC-15	6-MAR-16	5-MAR-16
3	A100	4	Clear site	1-JAN-16	5-JAN-16	1-JAN-16	5-JAN-16
4	A101	2	Excavate and lay fou	4-JAN-16	13-JAN-16	4-JAN-16	13-JAN-16
5	B100	9	Install support stee	20-JAN-16	29-JAN-16	20-JAN-16	31-JAN-16
6	B101	3	Install stairways	31-JAN-16	2-FEB-16	1-FEB-16	3-FEB-16
7	B102	7	Install handrails an	20-JAN-16	27-JAN-16	7-FEB-16	14-FEB-16
8	B103	8	Install platforms	3-FEB-16	11-FEB-16	5-FEB-16	14-FEB-16
9	C103	4	Connect pipework to	1-MAR-16	4-MAR-16	1-MAR-16	4-MAR-16
10	C100	4	Install equipment	12-FEB-16	17-FEB-16	15-FEB-16	23-FEB-16
11	H100	21	Install prefabricate	1-FEB-16	29-FEB-16	1-FEB-16	29-FEB-16

### 5.3. PCEDIT

This is the revised appearance for PCEDIT:

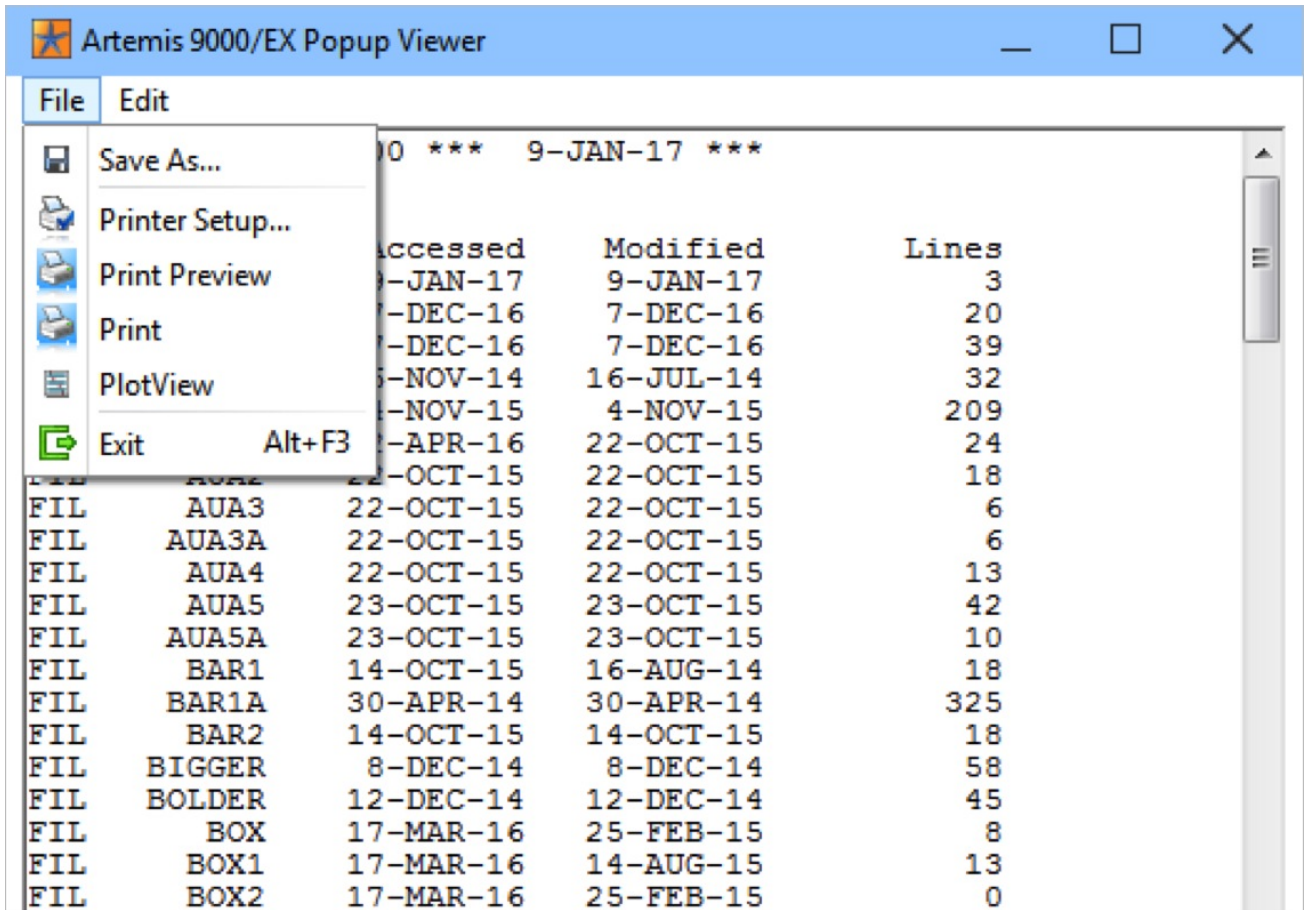
The screenshot shows the PCEDIT software interface for editing a record. The window title is "Dataset NCHAS, record 1". The form contains the following fields:

- Activity Number :
- Duration :
- Description :
- User Field 1 :
- User Field 2 :
- User Field 3 :
- User Field 4 :
- Early Start :
- Early Finish :
- Late Start :
- Late Finish :

At the bottom of the form, it says "Ready for review..."

## 5.4. PCVIEW

This is the new look and feel of PCVIEW:



## 6. Summary of Enhancements

Issued ID	Summary
ART9KCID-1746	System Limits - FILRAM increase the FILRAM blocks from 64000 to 256000 (256 MB to 1 GB)
ART9KCID-1754	System Limits - Double the File size
ART9KCID-1766	New look and feel - PCVIEW
ART9KCID-1788	New look and feel - PCEDIT
ART9KCID-1802	New look and feel - Barchart Editor
ART9KCID-1825	New look and feel - PCREVIEW
ART9KCID-1831	CostView Interface
ART9KCID-1842	Improvements to performance when initializing PCEDIT

## 7. Summary of Fixed Issues

Issued ID	Summary
ART9KCID-358	Barchart Editor - Dates and Integers should line up in the tabular area
ART9KCID-1363	No Log-off Message should be shown to user while exiting Artemis client
ART9KCID-1451	ARTADO - Issue with Date being passed as Varchar value in SQL Server
ART9KCID-1708	MDB Import - Fails on Windows 10
ART9KCID-1727	Artemis Snaps while executing the Transfer command
ART9KCID-1742	Polyline subcommand under Draw Sheet doesn't drop to : level
ART9KCID-1770	Artemis Client - Some users on Windows 7 in 32 Bit mode are getting a command prompt while opening Artemis session
ART9KCID-1791	Snap on Dataset containing over 2 Million records in a dataset
ART9KCID-1798	ARTADO - SQL Count (*) is returning 0 with ODBC Driver for Oracle while table has records
ART9KCID-1837	Barchart Editor: Issue with Menu items not refreshing correctly

## 8. Certified Platform Matrix

Artemis 9000/EX Enterprise 2016.4	
<b>Server</b>	Windows 2012 Server R2 Windows 2008 Server SP2 Windows 2003 Server SP2
<b>Client</b>	Windows 8, Windows 7, Windows Vista, Windows XP and Professional.
<b>Database Interfaces</b>	Oracle 11g, Oracle 10g, SQL Server 2012, SQL Server 2008, SQL Server 2005, DB/2 9.1, DB/2 8.1
<b>Microsoft Project Interface</b>	Microsoft Project 2010, 2007 and 2003

### Notes:

- ▶ Both 32-bit and 64-bit are supported for the Windows 7 and 8 client operating system.
- ▶ The following steps need to be followed to setup the Microsoft Project 2010 interface :
  - ▶ Install .Net framework 4.0 Client Profile or Full version by clicking on the \Install \dotNetFx40\_Client\_setup.exe
  - ▶ Install Visual Studio Tools for Office (VSTO) for Win32 or Win64 platforms by clicking on the \Install\vstor40\_x86.exe or \Install\vstor40x64.exe
  - ▶ Install MSProjectAddIn and macros for MS Project 2010. You have to run cmd file from \MSProjectAddIn\Install.cmd
  - ▶ All the relevant files can be found in a new folder called MSP2010 in the Artemis\Client folder. All the applications referenced are Open Source so there are no licensing implications.
  - ▶ Apply the SAVE AS MPX option to Microsoft Project :
    1. Locate the file called AR9000.mpp, found in the Client subdirectory.
    2. Double-click the file, which will locate and open your existing MSP.
    3. Click to Enable Macros.

**Note:** You may need to temporarily lower the security level for MSP to medium until after installing the Macro. An empty project will be opened and the “Save as MPX” option will be shown on the MSP Files drop-down menu list.