

Release Notes

---

# Artemis 9000/EX

Standard Edition 2016.3

Published: September 2016

## **COPYRIGHT**

While every attempt has been made to ensure that the information in this document is accurate and complete, some typographical, technical or other errors may exist. Artemis International Solutions does not offer any warranty for fitness for a particular purpose regarding any information contained in this document and will not under any circumstances accept responsibility for any kind of loss or damages that either directly or indirectly results from the use of this document.

This page shows the original publication date. The information contained in this document is provided for information purposes only, and is subject to change without notice. Any improvements or changes to the product will be documented in subsequent editions.

This document is protected by copyright. All Rights Reserved. No part of this document may be photocopied, reproduced, or translated into another language without the prior written consent of Artemis International Solutions Corporation.

U.S. Government Restricted Rights. The software and accompanying materials are provided with Restricted Rights. Use, duplication, or disclosure by the U.S. Government is subject to restrictions as set forth in subparagraphs (c) (1) and (2) of Commercial Computer Software - Restricted rights at Federal Acquisition Regulation, 48 C.F.R. 52.227-19 (June 1987 or current version), and the limitations as set forth in Artemis International Solutions Corporation's standard license agreement for this documentation.

© 2001-2016 Artemis International Solutions Corporation. All Rights Reserved.

ARTEMIS is a trademark of Artemis International Solutions Corporation. All other trademarks mentioned are the property of their respective owners.

## TABLE OF CONTENTS

<b>1. Release Overview</b>	<b>4</b>
<b>2. Upgrade Instructions</b>	<b>4</b>
2.1. Installation on LAN Systems (Windows 2012 Server)	4
<b>3. Enhancements</b>	<b>5</b>
3.1. Printing: Sharper image generation	5
3.2. PCEDIT Font: Verify Font with new Apply button	6
<b>4. Summary of Enhancements</b>	<b>7</b>
<b>5. Summary of Fixed Issues</b>	<b>8</b>
<b>6. Certified Platform Matrix</b>	<b>9</b>

## 1. Release Overview

Artemis 9000/EX Standard 2016.3 release contains enhancements and addresses issues reported by customers on the previous release of the product which was Version 2016.2 published in July 2016.

Update 3 contains seven fixes and two enhancements.

<b>Release Version</b>	Artemis 9000/EX Standard 2016.3
<b>Release Date</b>	September 2016
<b>Release Type</b>	Generally Availability (Customer Visible)
<b>Deliverables</b>	Product Release Software (Installer zip uploaded to FTP) Release Documentation (User Manuals and Release Notes)

## 2. Upgrade Instructions

### 2.1. Installation on LAN Systems (Windows 2012 Server)

The installation procedure for Artemis 9000/EX Version 2016 is as follows:

1. Backup any important data to tape or CD, especially the DB directory.
2. Use the Add/Remove Programs option to remove a previous install of Artemis 9000/EX.
3. Install Artemis 9000/EX Version 2016 from CD.
4. Amend the Custom Table with a current security string.
5. Install ID 5, ID 6, and ID 16 into your FILRAM to get the new softcode files.
6. If you use \*INSTALL ID 5 from the O/S filename - that will only overwrite your softcode files.
7. Ensure that the printers/plotters are set up as before.
8. Copy ID010.ID from the \db\_temp to your \DB folder to get the new libaried ID files.

The service name is Artemis 9000EX Version 2016 Standard.

### 3. Enhancements

#### 3.1. Printing: Sharper image generation

In Version 2016.2, users were given the ability to generate images in either JPG, PNG or BMP format using the syntax :

- plot file xxx on pc c:\directory\xxx.jpg

In Version 2016.3, the images are now much sharper and crisper. The screenshot below illustrates the difference between JPG image in Version 2016.2 and the same image in the current version.

#### Version 2016.2:

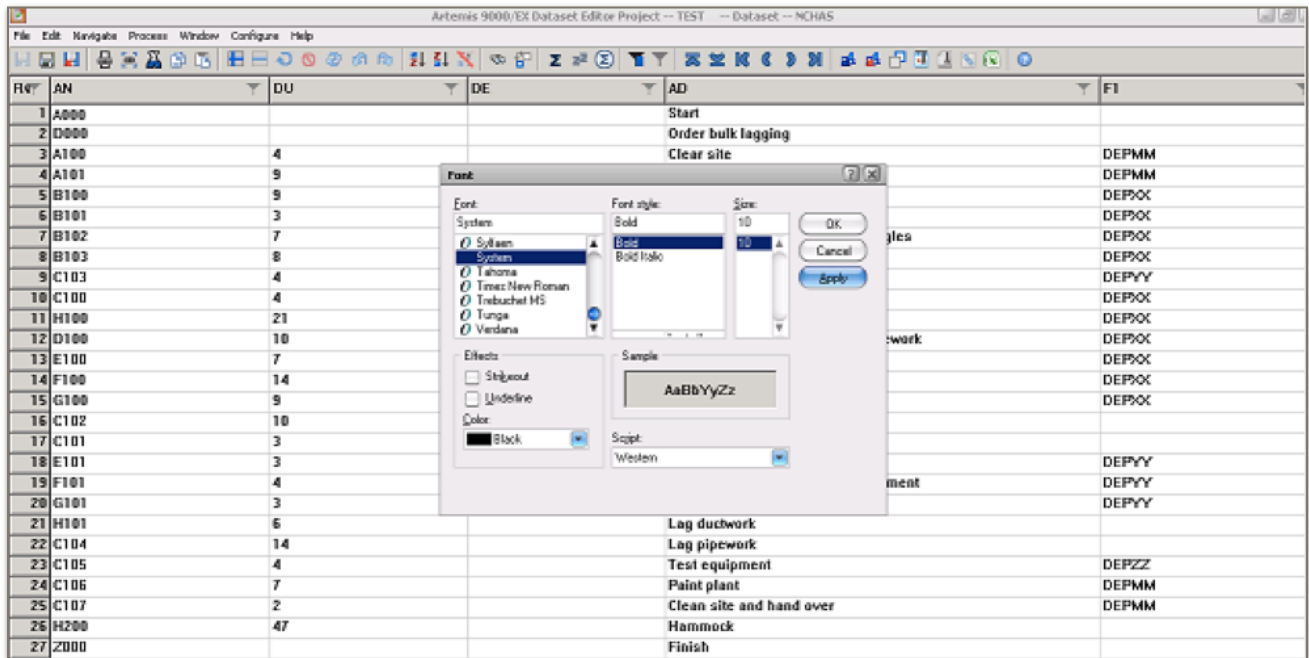
Index 058				
	Name	Accessed	Modified	Lines
FIL	&&STACK&	10-AUG-2016	10-AUG-2016	3
FIL	&4	10-AUG-2016	10-AUG-2016	25
FIL	&5	10-AUG-2016	10-AUG-2016	17
FIL	CONORA	10-AUG-2016	8-AUG-2016	3
FIL	DEMOMAP	10-AUG-2016	9-AUG-2016	68
PRJ	TEMP	10-AUG-2016	10-AUG-2016	
PRJ	TEST	12-AUG-2016	12-AUG-2016	
Totals: Projects=2, files=5, lines=116				

#### Version 2016.3:

Index 058				
	Name	Accessed	Modified	Lines
FIL	&&STACK&	10-AUG-2016	10-AUG-2016	3
FIL	&4	10-AUG-2016	10-AUG-2016	25
FIL	&5	10-AUG-2016	10-AUG-2016	17
FIL	CONORA	10-AUG-2016	8-AUG-2016	3
FIL	DEMOMAP	10-AUG-2016	9-AUG-2016	68
PRJ	TEMP	10-AUG-2016	10-AUG-2016	
PRJ	TEST	12-AUG-2016	12-AUG-2016	
Totals: Projects=2, files=5, lines=116				

### 3.2. PCEDIT Font: Verify Font with new Apply button

In Version 2016.2, users needed to click OK and close the Font dialog panel to verify how the font would look in PCEDIT. However, in Version 2016.3, users are able to click on the Apply Button to immediately verify the Font settings without the necessity to exit the Set Font dialog.



## 4. Summary of Enhancements

Issued ID	Summary
ART9KCID-1327	PCEDIT - Allow preview of changed font without clicking OK.
ART9KCID-1612	Increase the resolution of generated images when using the create JPG enhancement.

## 5. Summary of Fixed Issues

Issued ID	Summary
ART9KCID-1654	Alignment of data in generated image file is NOT the same as the Artemis file.
ART9KCID-1655	Printing on any printer other than PDF printer is causing an error.
ART9KCID-1664	Using the print to JPG feature while generating the image, the supplied font is not being used.
ART9KCID-1681	Barchart Editor - Exception occurs when No Default Printer is Selected on the Client System.
ART9KCID-1706	Snap while executing "IF Entered" Condition.
ART9KCID-1715	Barchart Editor - Issue with Error message when trying to create a network when the same dataset name already exists.
ART9KCID-1720	Barchart Editor - Application asks to Save the changes even when there are no changes made.



## 6. Certified Platform Matrix

	Artemis 9000/EX Standard 2016.3
<b>Server</b>	<p>Windows 2012 Server R2 Windows 2008 Server SP2 Windows 2003 Server SP2</p> <p><b>Databases:</b> Oracle 11g, Oracle 10g, SQL Server 2012, SQL Server 2008, SQL Server 2005, DB/2 9.1, DB/2 8.1. <b>Interfaces:</b> Microsoft Project 2010, 2007 and 2003.</p>
<b>Client</b>	Windows 8, Windows 7, Windows Vista, Windows XP and Professional.

### Notes:

- ▶ Both 32-bit and 64-bit are supported for the Windows 7 and 8 client operating system.
- ▶ The following steps need to be followed to setup the Microsoft Project 2010 interface :
  - Install .Net framework 4.0 Client Profile or Full version by clicking on the \Install\dotNetFx40\_Client\_setup.exe
  - Install Visual Studio Tools for Office (VSTO) for Win32 or Win64 platforms by clicking on the \Install\vstor40\_x86.exe or \Install\vstor40x64.exe
  - Install MSPProjectAddIn and macros for MS Project 2010. You have to run cmd file from \MSPProjectAddIn\Install.cmd
  - All the relevant files can be found in a new folder called MSP2010 in the Artemis\Client folder. All the applications referenced are Open Source so there are no licensing implications.
  - Apply the SAVE AS MPX option to Microsoft Project :
    1. Locate the file called AR9000.mpp, found in the Client subdirectory.
    2. Double-click the file, which will locate and open your existing MSP.
    3. Click to Enable Macros.

**Note:** You may need to temporarily lower the security level for MSP to medium until after installing the Macro. An empty project will be opened and the “Save as MPX” option will be shown on the MSP Files drop-down menu list.