

Release Notes

Artemis 9000/EX

Enterprise Edition 2016.3

Published: September 2016

COPYRIGHT

While every attempt has been made to ensure that the information in this document is accurate and complete, some typographical, technical or other errors may exist. Artemis International Solutions does not offer any warranty for fitness for a particular purpose regarding any information contained in this document and will not under any circumstances accept responsibility for any kind of loss or damages that either directly or indirectly results from the use of this document.

This page shows the original publication date. The information contained in this document is provided for information purposes only, and is subject to change without notice. Any improvements or changes to the product will be documented in subsequent editions.

This document is protected by copyright. All Rights Reserved. No part of this document may be photocopied, reproduced, or translated into another language without the prior written consent of Artemis International Solutions Corporation.

U.S. Government Restricted Rights. The software and accompanying materials are provided with Restricted Rights. Use, duplication, or disclosure by the U.S. Government is subject to restrictions as set forth in subparagraphs (c) (1) and (2) of Commercial Computer Software - Restricted rights at Federal Acquisition Regulation, 48 C.F.R. 52.227-19 (June 1987 or current version), and the limitations as set forth in Artemis International Solutions Corporation's standard license agreement for this documentation.

© 2001-2016 Artemis International Solutions Corporation. All Rights Reserved.

ARTEMIS is a trademark of Artemis International Solutions Corporation. All other trademarks mentioned are the property of their respective owners.

TABLE OF CONTENTS

1. Release Overview	4
2. Upgrade Instructions	4
2.1. Installation on LAN Systems (Windows 2012 Server)	4
3. Enhancements	5
3.1. Increased System Limits: Increase the Index Limit from 800 to 1600	5
3.2. Increased System Limits: Increase the 800 Library Limit for Read Only Datasets and Networks	5
3.3. Printing: Sharper image generation	6
3.4. PCEDIT Font: Verify Font with new Apply button	7
3.5. PCNET: Custom Processes	8
3.6. PCNET: Configuration File Implementation	8
3.7. PCEDIT: Spell Check Facility	9
4. Summary of Enhancements	10
5. Summary of Fixed Issues	11
6. Certified Platform Matrix	12

1. Release Overview

Artemis 9000/EX Enterprise 2016.3 release contains enhancements and addresses issues reported by customers on the previous release of the product which was Version 2016.2 published in July 2016.

Update 3 contains ten fixes and seven enhancements.

Release Version	Artemis 9000/EX Enterprise 2016.3
Release Date	September 2016
Release Type	Generally Availability (Customer Visible)
Deliverables	Product Release Software (Installer zip uploaded to FTP) Release Documentation (User Manuals and Release Notes)

2. Upgrade Instructions

2.1. Installation on LAN Systems (Windows 2012 Server)

The installation procedure for Artemis 9000/EX Version 2016 is as follows:

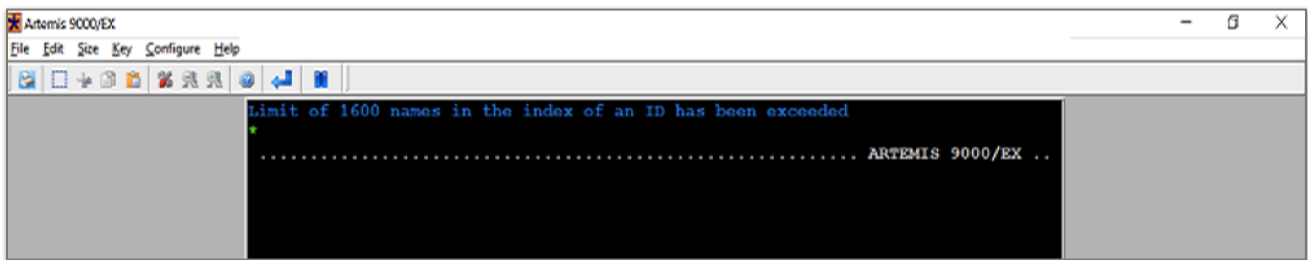
1. Backup any important data to tape or CD, especially the DB directory.
2. Use the Add/Remove Programs option to remove a previous install of Artemis 9000/EX.
3. Install Artemis 9000/EX Version 2016 from CD.
4. Amend the Custom Table with a current security string.
5. Install ID 5, ID 6, and ID 16 into your FILRAM to get the new softcode files.
6. If you use *INSTALL ID 5 from the O/S filename - that will only overwrite your softcode files.
7. Ensure that the printers/plotters are set up as before.
8. Copy ID010.ID from the \db_temp to your \DB folder to get the new libaried ID files.

The service name is Artemis 9000EX Version 2016 Enterprise.

3. Enhancements

3.1. Increased System Limits: Increase the Index Limit from 800 to 1600

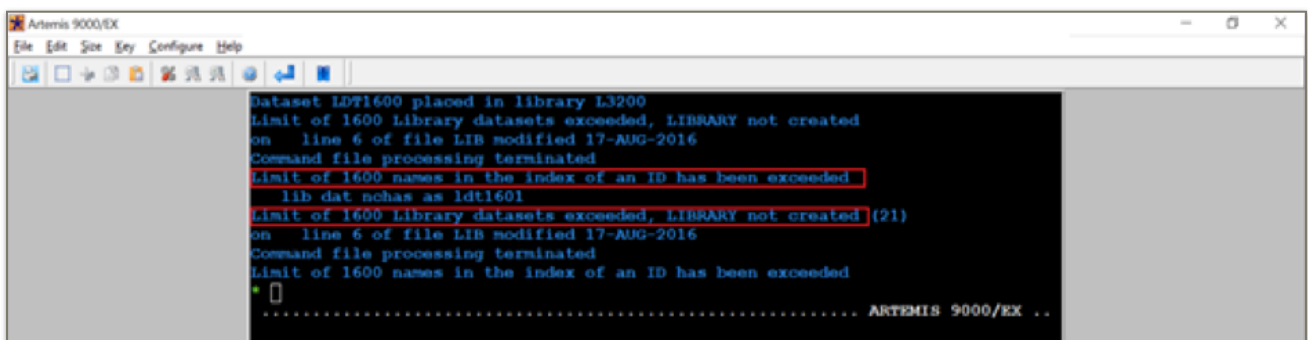
Up until Version 2016.2, users could only create up to 800 Indexes in an ID. However, in Version 2016 Update 3, users are now able to have up to 1600 Indexes in an ID. This will potentially allow for double the number of files to be created in each ID. This is part of a general review of Artemis 9000/EX system limits which be continued in the next release.



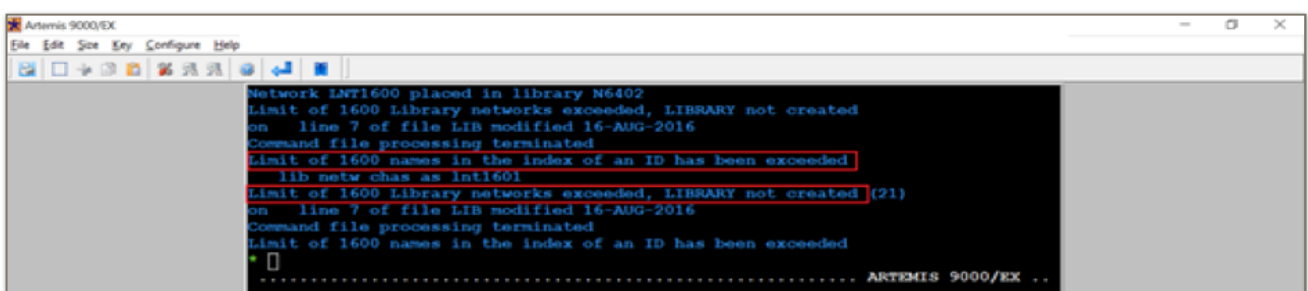
3.2. Increased System Limits: Increase the 800 Library Limit for Read Only Datasets and Networks

In previous versions, there was a limit of 800 on the number of Read-Only Datasets and Networks that could be created in the system. In Version 2016.3, this limit has been doubled to allow the creation of up to 1600 Read-Only Datasets and Libraries.

Read-Only Dataset Limit



Read-Only Library Networks Limit



3.3. Printing: Sharper image generation

In Version 2016.2, users were given the ability to generate images in either JPG, PNG or BMP format using the syntax :

- plot file xxx on pc c:\directory\xxx.jpg

In Version 2016.3, the images are now much sharper and crisper. The screenshot below illustrates the difference between JPG image in Version 2016.2 and the same image in the current version.

Version 2016.2:

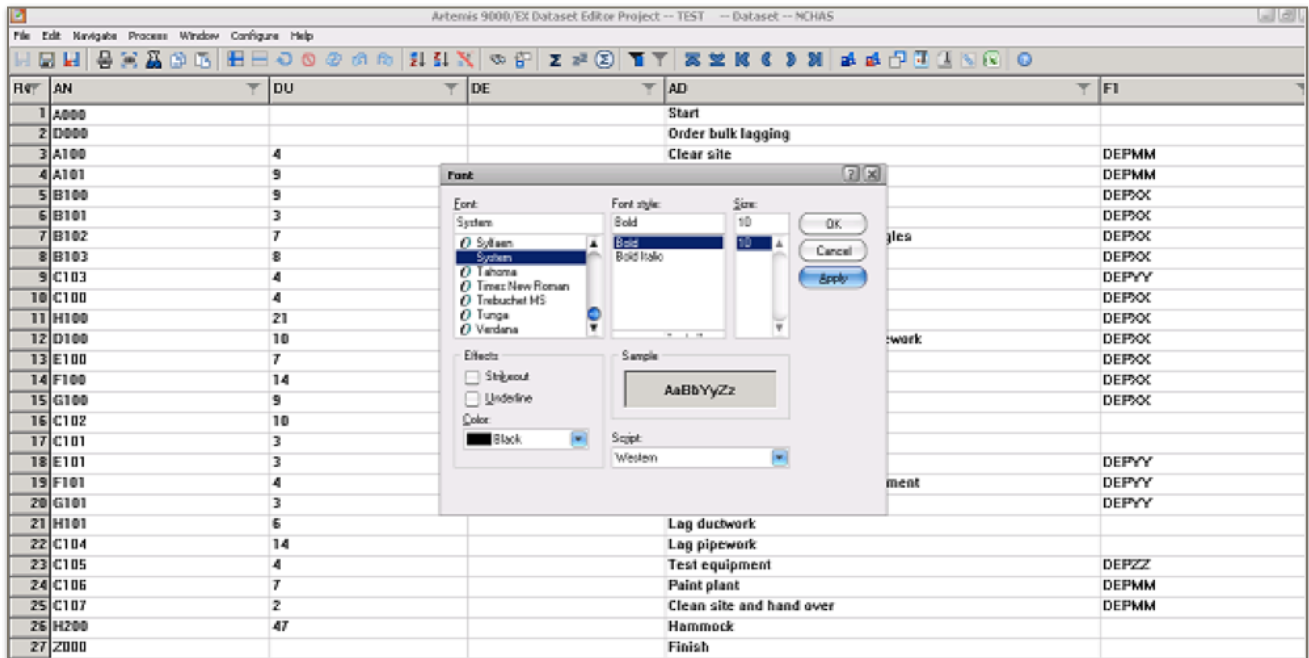
Index 058				
	Name	Accessed	Modified	Lines
FIL	&&STACK&	10-AUG-2016	10-AUG-2016	3
FIL	&4	10-AUG-2016	10-AUG-2016	25
FIL	&5	10-AUG-2016	10-AUG-2016	17
FIL	CONORA	10-AUG-2016	8-AUG-2016	3
FIL	DEMOMAP	10-AUG-2016	9-AUG-2016	68
PRJ	TEMP	10-AUG-2016	10-AUG-2016	
PRJ	TEST	12-AUG-2016	12-AUG-2016	
Totals: Projects=2, files=5, lines=116				

Version 2016.3:

Index 058				
	Name	Accessed	Modified	Lines
FIL	&&STACK&	10-AUG-2016	10-AUG-2016	3
FIL	&4	10-AUG-2016	10-AUG-2016	25
FIL	&5	10-AUG-2016	10-AUG-2016	17
FIL	CONORA	10-AUG-2016	8-AUG-2016	3
FIL	DEMOMAP	10-AUG-2016	9-AUG-2016	68
PRJ	TEMP	10-AUG-2016	10-AUG-2016	
PRJ	TEST	12-AUG-2016	12-AUG-2016	
Totals: Projects=2, files=5, lines=116				

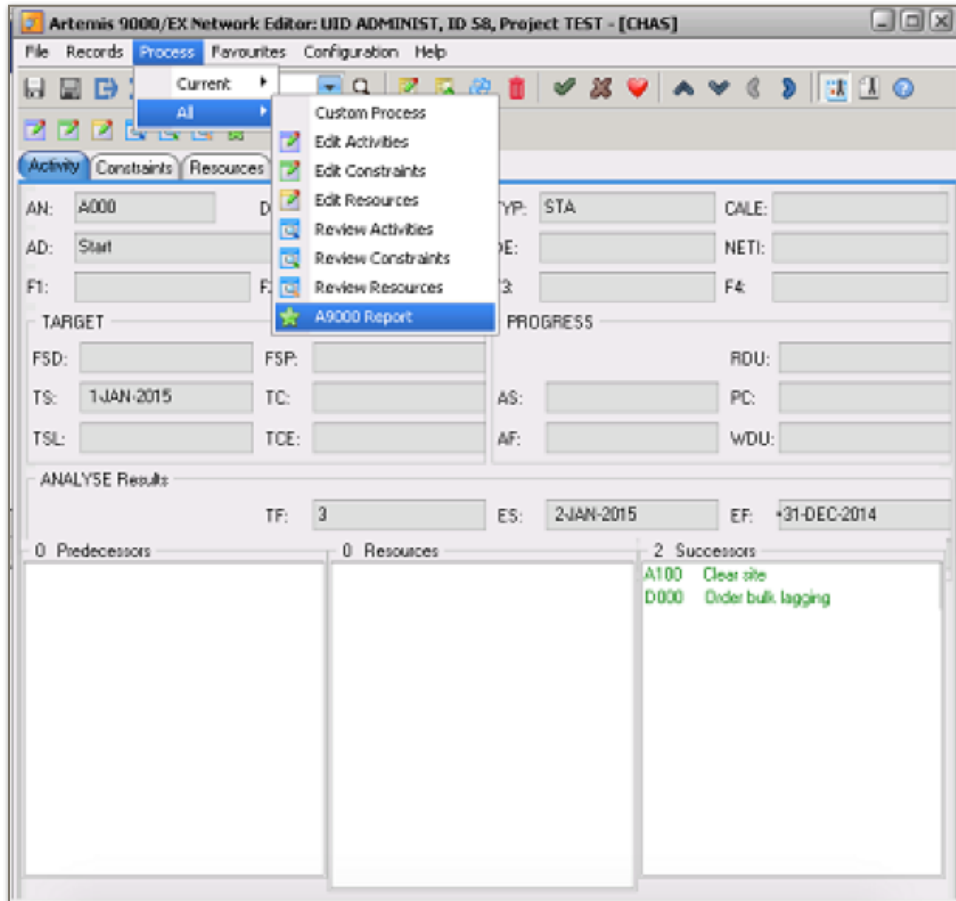
3.4. PCEDIT Font: Verify Font with new Apply button

In Version 2016.2, users needed to click OK and close the Font dialog panel to verify how the font would look in PCEDIT. However, in Version 2016.3, users are able to click on the Apply Button to immediately verify the Font settings without the necessity to exit the Set Font dialog.



3.5. PCNET: Custom Processes

In Version 2016.3, customers are now able to write their own Customer Processes in PCNET. Here is an example of Custom Process called “A9000 Report” which runs a command file which in turn generates a report file which is displayed on the screen.



3.6. PCNET: Configuration File Implementation

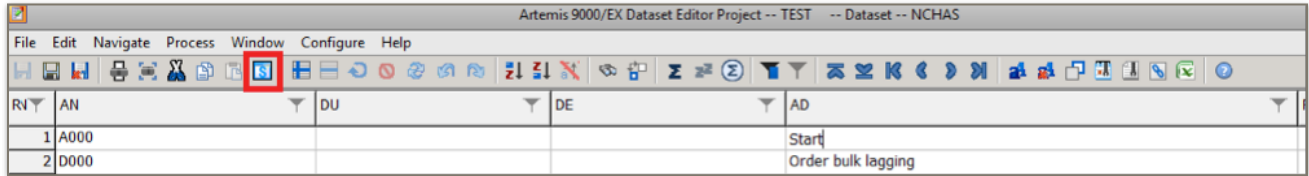
In previous versions, users were not able to supply a configuration file with PCNET. However, in Version 2016.3, it is now possible to add configuration files using the syntax detailed below :

- PCNET
 - > in NETWORKNAME
 - > file &1
 - > end

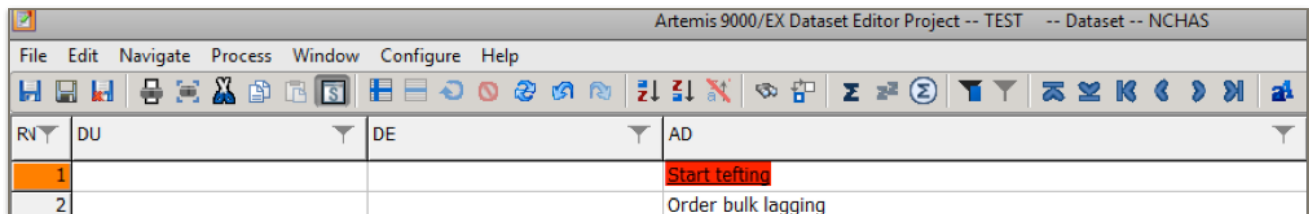
File &1 will have the PCNET default configuration when initially opening the network and any changes made during the PCNET session around configuration will then be saved in the file which in this case is file &1. The changes will be kept in the file rather than being captured in PCNET.INI.

3.7. PCEDIT: Spell Check Facility

In Version 2016.3, users are now able to invoke a Spell Check Facility in PCEDIT by a click of a button.



Once you enable the spell check with new button created on Toolbar – shown above - PCEDIT will perform a spell check in any text field. In this example, the spell checker has highlighted a misspelling of the word “testing”.



4. Summary of Enhancements

Issued ID	Summary
ART9KCID-176	System Limits - Increase 800 Library Limit for Read-Only Networks and Datasets
ART9KCID-1327	PCEDIT - Allow preview of changed font without clicking OK.
ART9KCID-1594	System Limits - Increase the index limit from Current Limit of 800 to 1600
ART9KCID-1612	Increase the resolution of generated images when using the create JPG enhancement.
ART9KCID-1658	PCNET - Configuration File implemented.
ART9KCID-1677	PCNET - Custom Processes implemented.
ART9KCID-1711	PCEDIT - Spell Check Facility

5. Summary of Fixed Issues

Issued ID	Summary
ART9KCID-784	PCBAR - Issue with Error message when trying to create a network with same dataset name.
ART9KCID-1255	PCEDIT - Columns Headings & Sort Buttons are not showing completely on some columns.
ART9KCID-1644	Barchart Editor - Access Violation Error while opening a network.
ART9KCID-1654	Alignment of data in generated image file is NOT the same as the Artemis file.
ART9KCID-1664	Using the new automatic generation of JPG files functionality, the font supplied is not being taken into account while generating images.
ART9KCID-1681	Barchart Editor - Exception occurs when No Default Printer is Selected on the Client System.
ART9KCID-1690	Barchart Editor - Different Panels are shown depending on whether the Configuration file is absent or present.
ART9KCID-1702	PlotView - Save As option is greyed out when using PlotView on a Shared Drive.
ART9KCID-1703	PCNET - Should have options only for All options under Process.
ART9KCID-1706	Snap while executing "IF Entered" Condition.

6. Certified Platform Matrix

	Artemis 9000/EX Enterprise 2016.3
Server	<p>Windows 2012 Server R2 Windows 2008 Server SP2 Windows 2003 Server SP2</p> <p>Databases: Oracle 11g, Oracle 10g, SQL Server 2012, SQL Server 2008, SQL Server 2005, DB/2 9.1, DB/2 8.1. Interfaces: Microsoft Project 2010, 2007 and 2003.</p>
Client	Windows 8, Windows 7, Windows Vista, Windows XP and Professional.

Notes:

- ▶ Both 32-bit and 64-bit are supported for the Windows 7 and 8 client operating system.
- ▶ The following steps need to be followed to setup the Microsoft Project 2010 interface :
 - Install .Net framework 4.0 Client Profile or Full version by clicking on the \Install\dotNetFx40_Client_setup.exe
 - Install Visual Studio Tools for Office (VSTO) for Win32 or Win64 platforms by clicking on the \Install\vstor40_x86.exe or \Install\vstor40x64.exe
 - Install MSProjectAddIn and macros for MS Project 2010. You have to run cmd file from \MSProjectAddIn\Install.cmd
 - All the relevant files can be found in a new folder called MSP2010 in the Artemis\Client folder. All the applications referenced are Open Source so there are no licensing implications.
 - Apply the SAVE AS MPX option to Microsoft Project :
 1. Locate the file called AR9000.mpp, found in the Client subdirectory.
 2. Double-click the file, which will locate and open your existing MSP.
 3. Click to Enable Macros.

Note: You may need to temporarily lower the security level for MSP to medium until after installing the Macro. An empty project will be opened and the “Save as MPX” option will be shown on the MSP Files drop-down menu list.